

INTELLIGENT

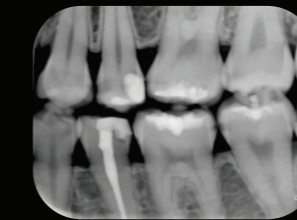
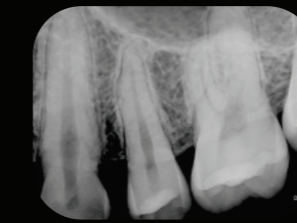


DESIGNED WITH THE DENTIST IN MIND

Apixia's reinvention of digital imaging begins with an industry-leading sensor design offering >20 lp/mm image resolution and outstanding patient comfort with rounded sensor corners and a pliable yet durable cable design. Bright LED status lights on the cord control box provide system feedback in a highly visible location. The rugged design provides extra durability that meets the needs of demanding practices.



INSTANT



IMAGES APPEAR WITHIN SECONDS

Images appear within seconds to be annotated, emailed, and stored, along with a wide variety of other included convenient features. The innovation continues with a direct high speed USB 2.0 connection into the computer for instant "plug and play" convenience. Save time and energy by eliminating the need for processing and development time with Apixia digital sensors.



INTUITIVE

POWERFUL SOFTWARE INCLUDED

Apixia Digital Imaging Software is included at no charge with the Scanner. Packed with value, Apixia includes unlimited user licenses to install on as many computers as you wish, free technical support for as long you own the product, and complimentary software upgrades for life.

The software delivers dozens of powerful features, presented with simplicity and technological elegance.

Free Apixia networking software gives you the ability to access all your patient files from any computer in your clinic network.

* Optional 3rd party practice management bridging may be available in your area. Contact your local Apixia dealer for more details.

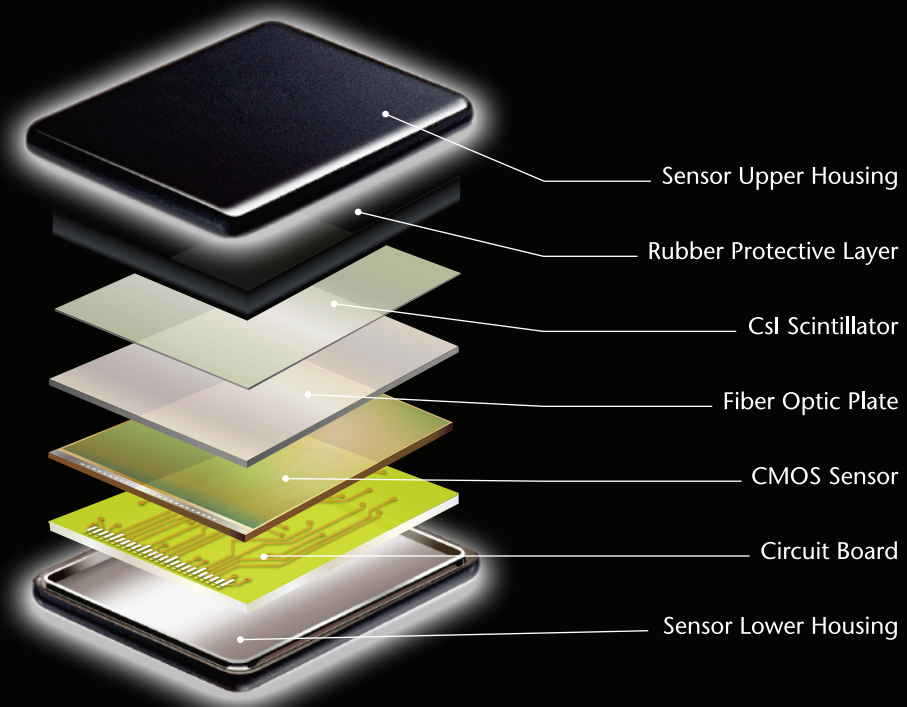


	SIZE 1	SIZE 2
Sensor Dimensions	38.2x28.2x 6.3 mm	44x32.7x6.3 mm
Active Area	31.5 x 23.0 mm	37.2 x 27.6 mm
Theoretical Resolution	27 lp/mm	27 lp/mm
True Resolution	>20 lp/mm	>20 lp/mm
Total Cable Length	2.9 m ± 0.1 m	2.9 m ± 0.1 m
Connection Type	USB 2.0	USB 2.0
Design Type	CMOS Cesium Iodide Coated Scintillator with Fiber Optic Plate	
Image File Size	800 KB	1.5 MB
Image Pixels	1600 x 1200	1920 x 1440
Pixel Size	18.5µm x 18.5µm	18.5µm x 18.5µm
Gray Levels	8-bit	8-bit

Computer System Requirements	Note: Computer not included
Windows Versions	Windows 11, Windows 10, Windows 7 32/64-bits
Min. RAM	768 MB, 1 GB recommended CPU 2.6 GHz
Min. Video Card	SVGA 1024 x 768
Min. Hard Drive Space	40 GB
Monitor	High Quality Display (Flat Panel or CRT) recommended. 1000:1 Contrast Ratio and 0.255 dot pitch recommended.
Backup System highly recommended. High Speed Internet is suggested for enhanced technical support assistance.	

VALUE BY DESIGN

Apixia delivers image quality and features rivaling competing systems at a fraction of the cost. Apixia digital sensors use the latest innovations in design, manufacturing and technology to delivery groundbreaking value in digital X-ray.



WHY APIXIA?

- Theoretical Resolution 27 lp/mm, True Resolution > 20 lp/mm
- Rounded Corners for Patient Comfort
- Direct USB Connection
- Powerful, Easy to Use Software Included
- Value-Priced for Any Dental Practice

DIGIREX[®] DIGITAL SENSOR DIGITAL DENTAL RADIOGRAPHY IMAGING SYSTEM

Going digital has never been easier



Apixia Corporation Company Address: 7F-1, 128, Sec.2, Dunhua S. Rd., Da-An Dist., Taipei City Taiwan R.O.C.
Office: +886-2-27022608 Fax: +886-2-27554919 Email: sales@apixia.asia www.apixia.com

Apixia Inc. Company Address: 18688 San Jose Ave. Industry, CA 91748 USA
Office: +1-626-810-9201 Fax: +1-626-810-9207 Email: info@apixia.com www.apixia.net

Apixia Japan Company Address: 1324, Ooida, Daian-cho, Inabe-shi, Mie-ken 511-0274, Japan
Office: +81-59-441-3080 Fax: +81-59-441-3081 Email: sales3@apixia.asia www.apixia.co.jp

